

# MAGNETIC INDUCTION

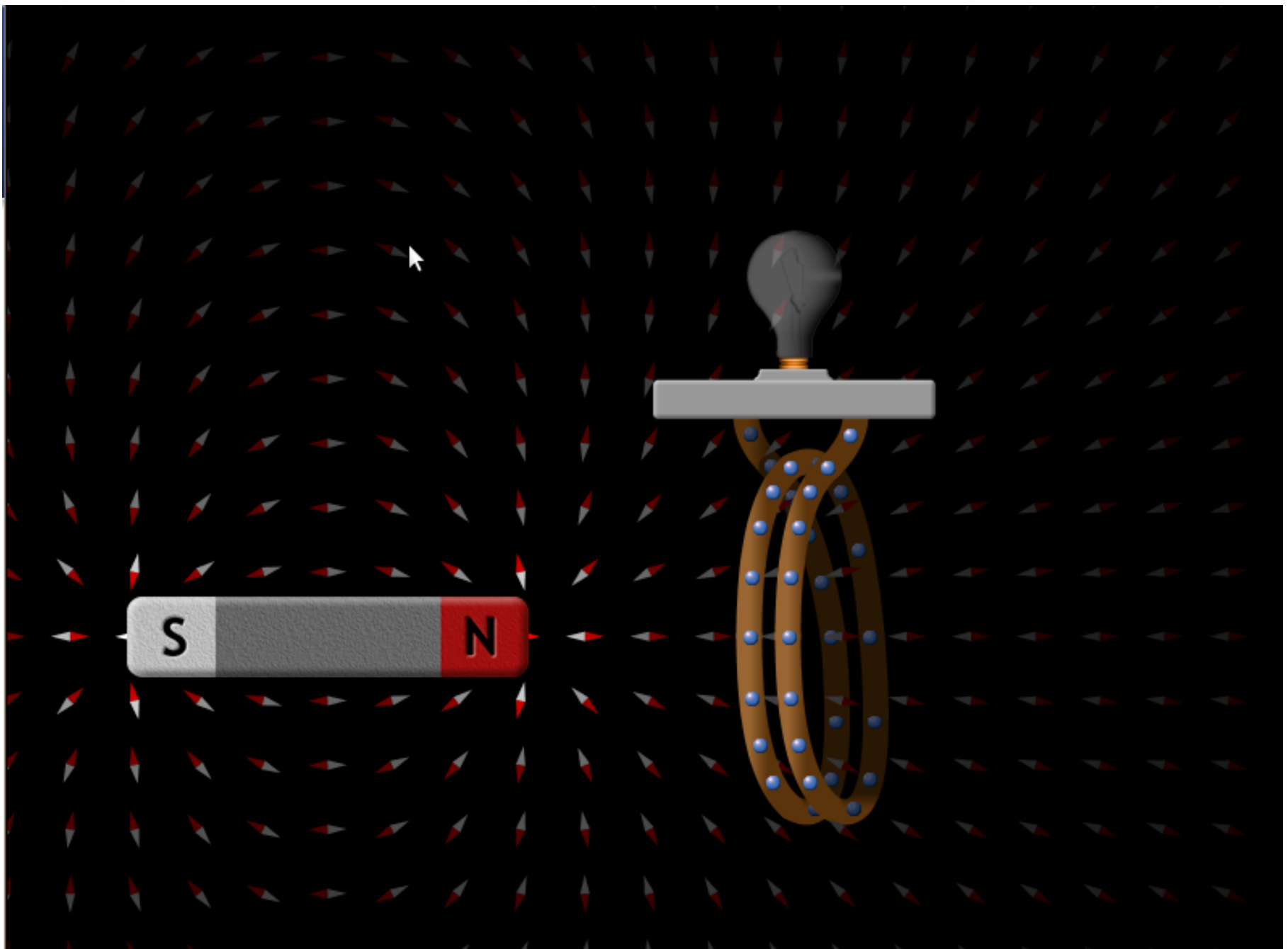
Prof. Stephen Sekula

11/3/2010

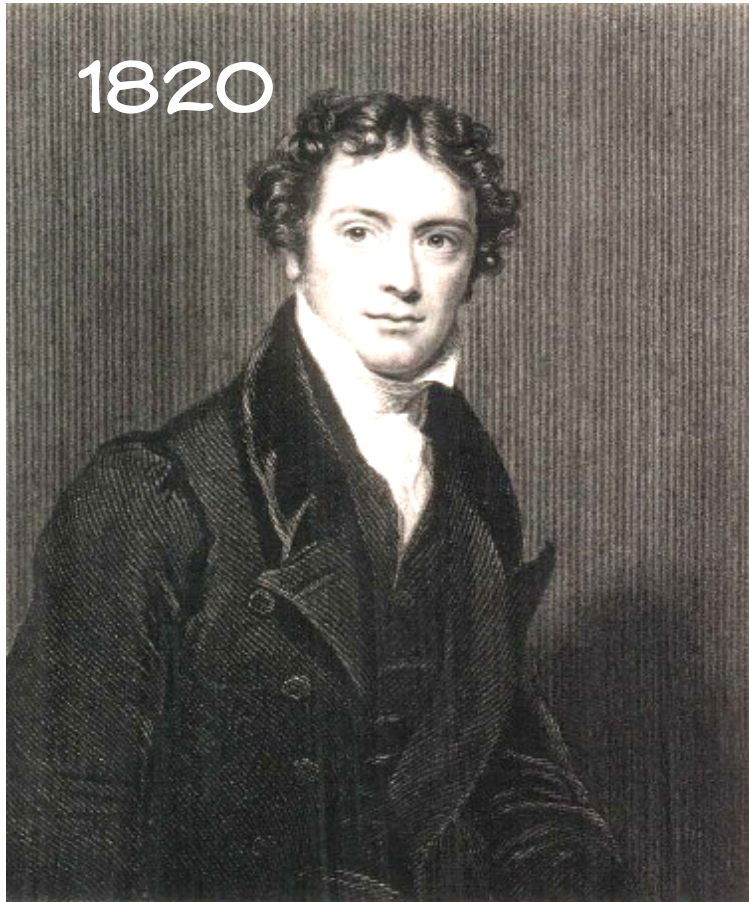
Supplementary Material for  
PHY1308 (General Physics -  
Electricity and Magnetism)

# ANNOUNCEMENTS

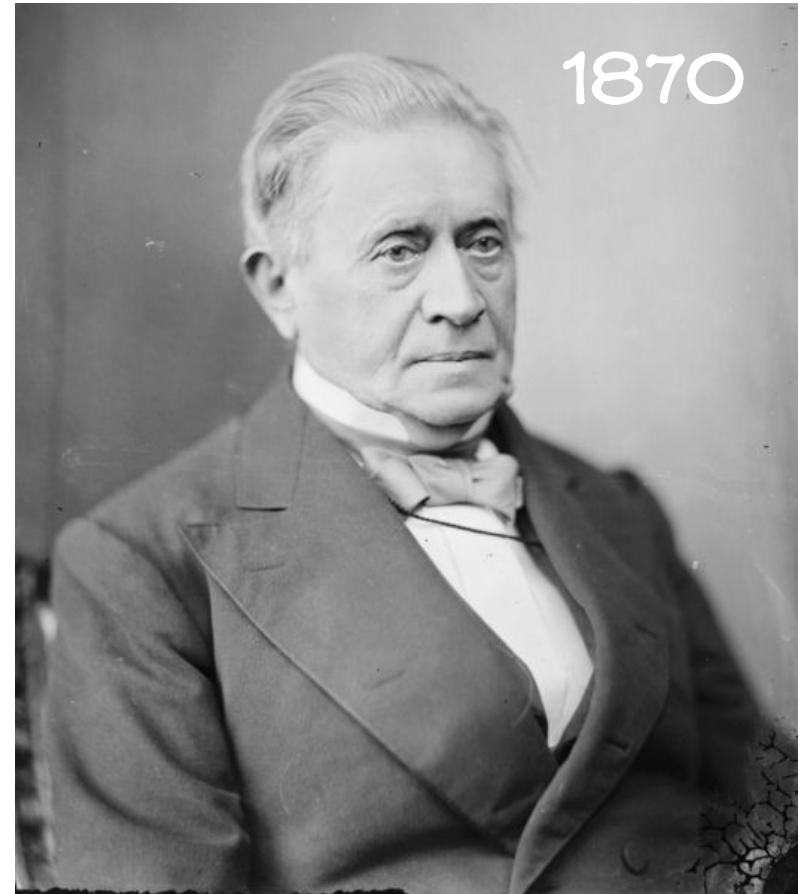
- Homework 10:
  - Due Monday at 5pm
  - Covers CH26, CH27.1-27.2
- Next Quiz
  - Friday, in-class
  - Covers Homework 9



<http://phet.colorado.edu/en/simulation/faraday>



Michael Faraday  
1792-1867



Joseph Henry  
1797-1878

Both of them discovered that a changing magnetic flux induces an electric current in a conductor.