

# MIRRORS

Prof. Stephen Sekula

4/21/2011

Supplementary Material for  
PHY1308 (General Physics -  
Electricity and Magnetism)

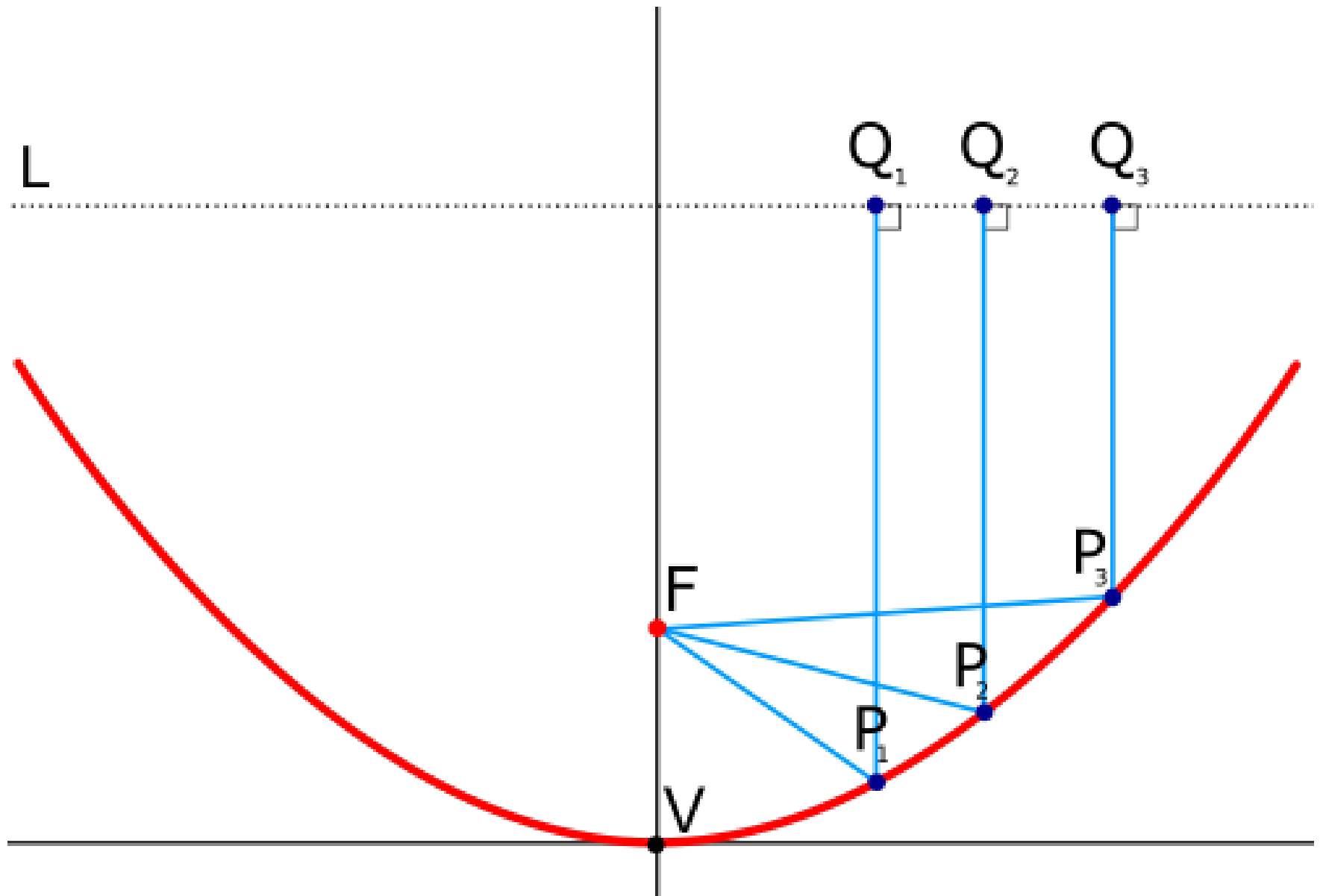
# ANNOLINCEMENTS

- Homework 11:
  - Due next Tuesday
- Extra credit
  - Due Friday by 5pm (email)

# PLANE MIRROR



# PARABOLIC REFLECTOR



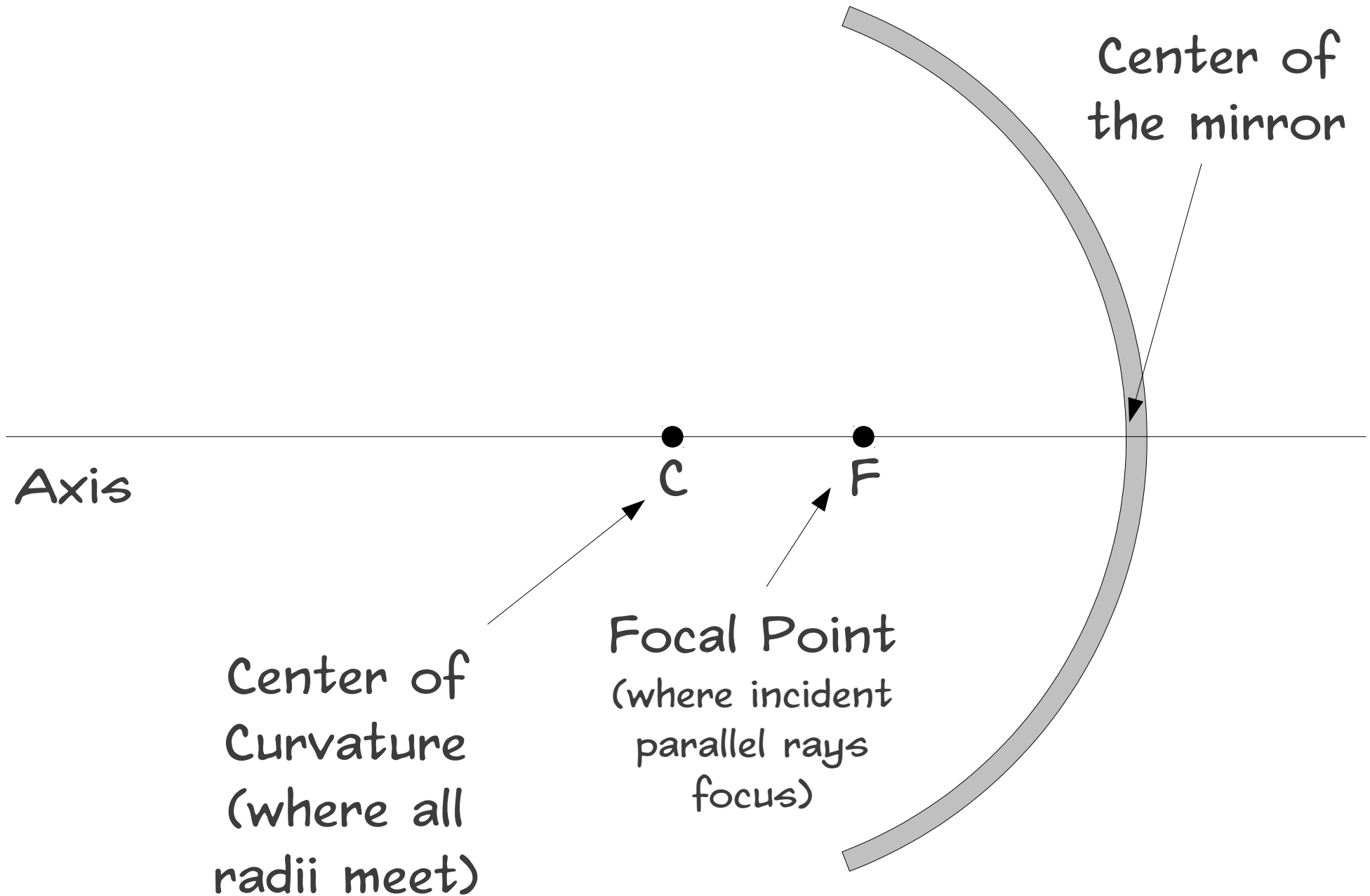




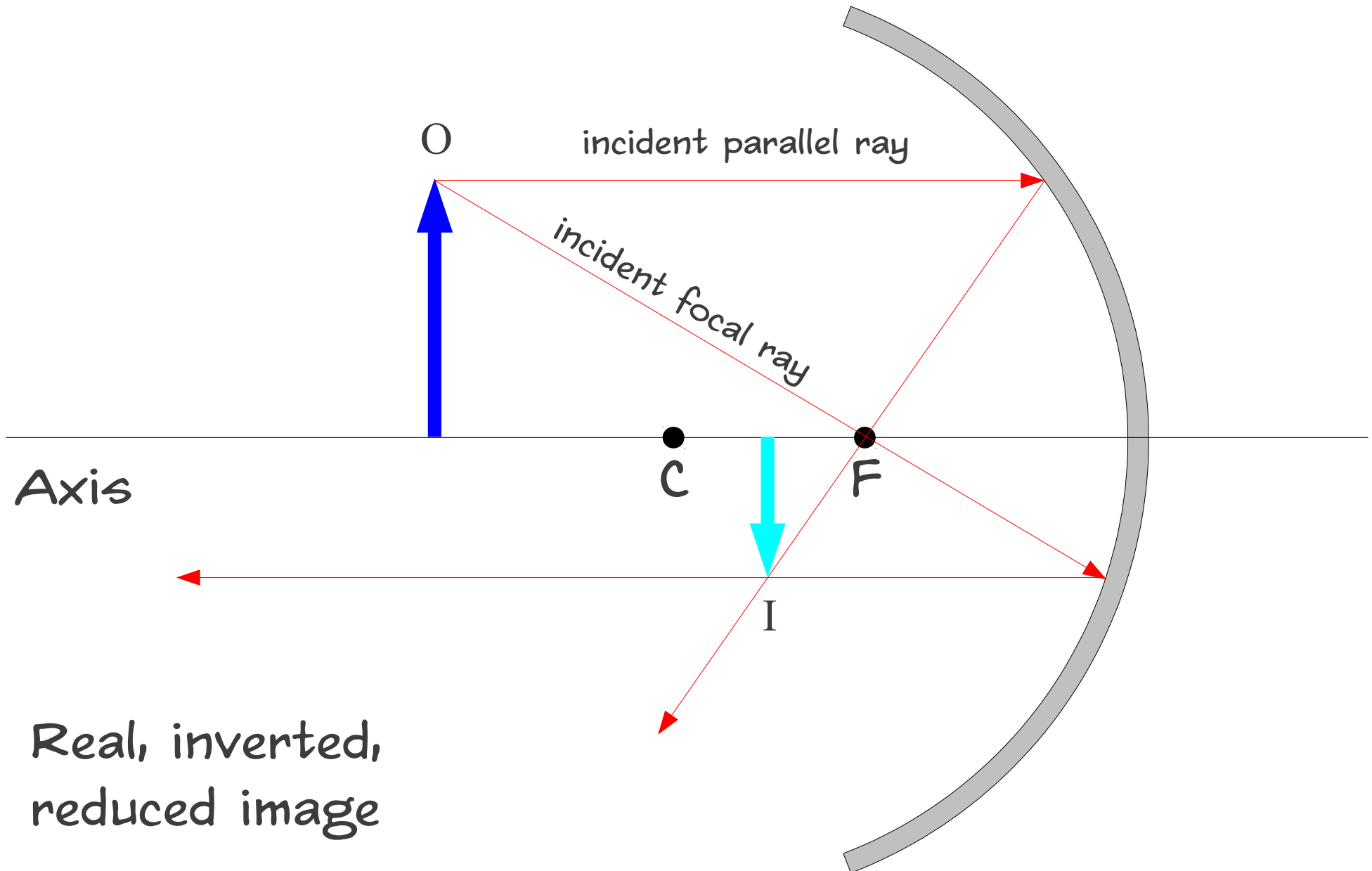
# HUBBLE SPACE TELESCOPE: BEFORE AND AFTER REPAIR



# CONCAVE MIRROR



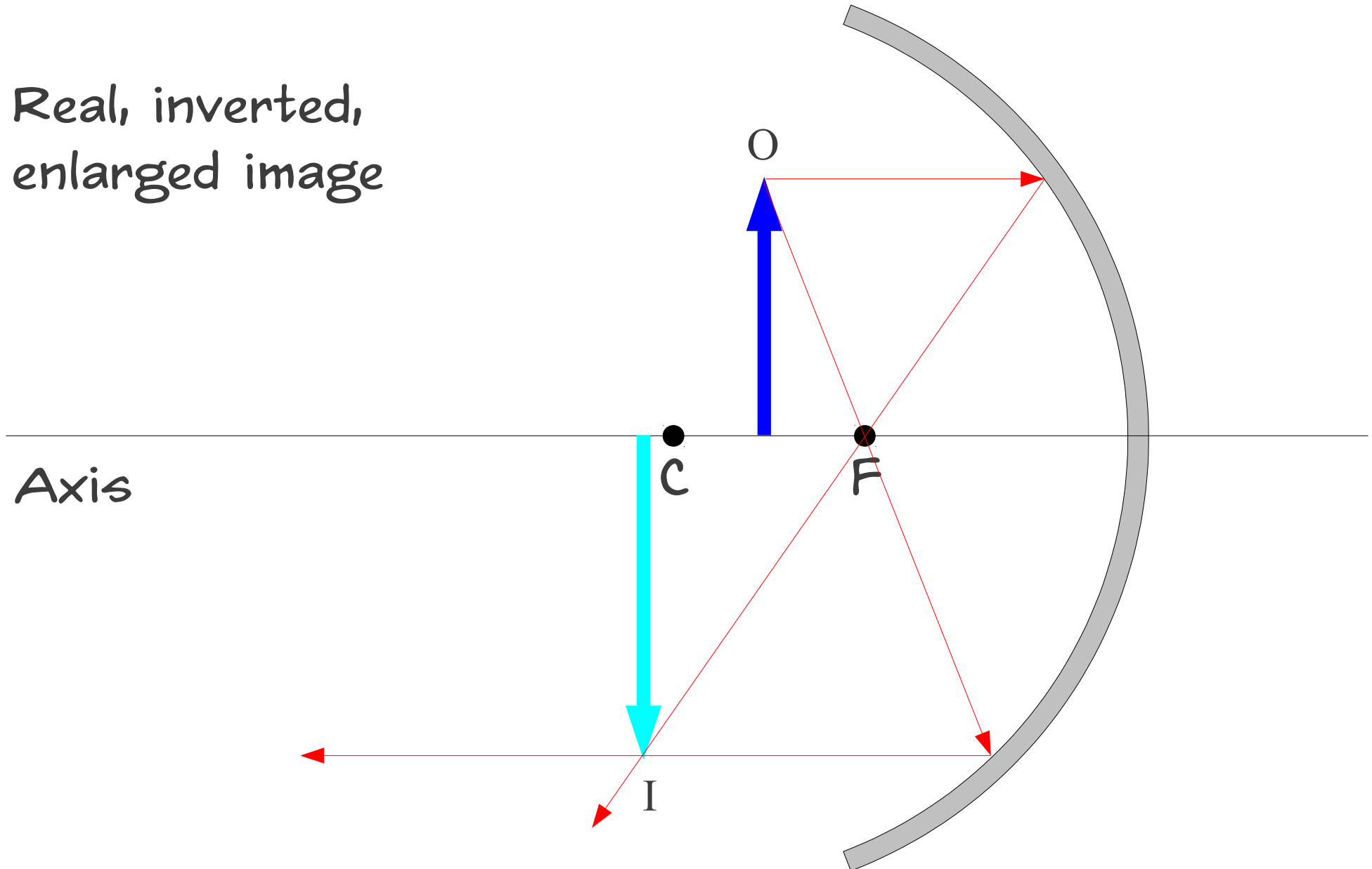
# CONCAVE MIRROR

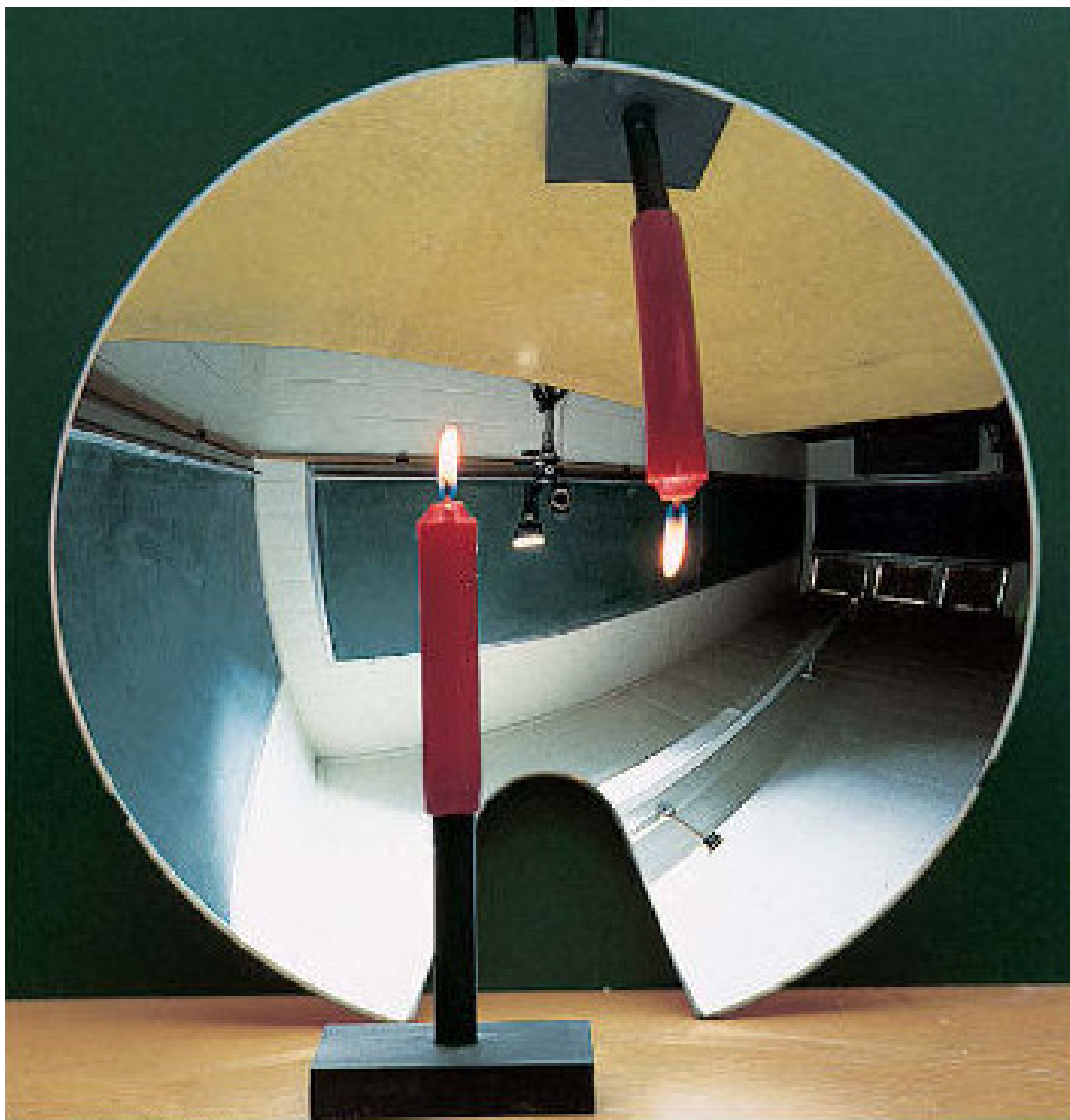




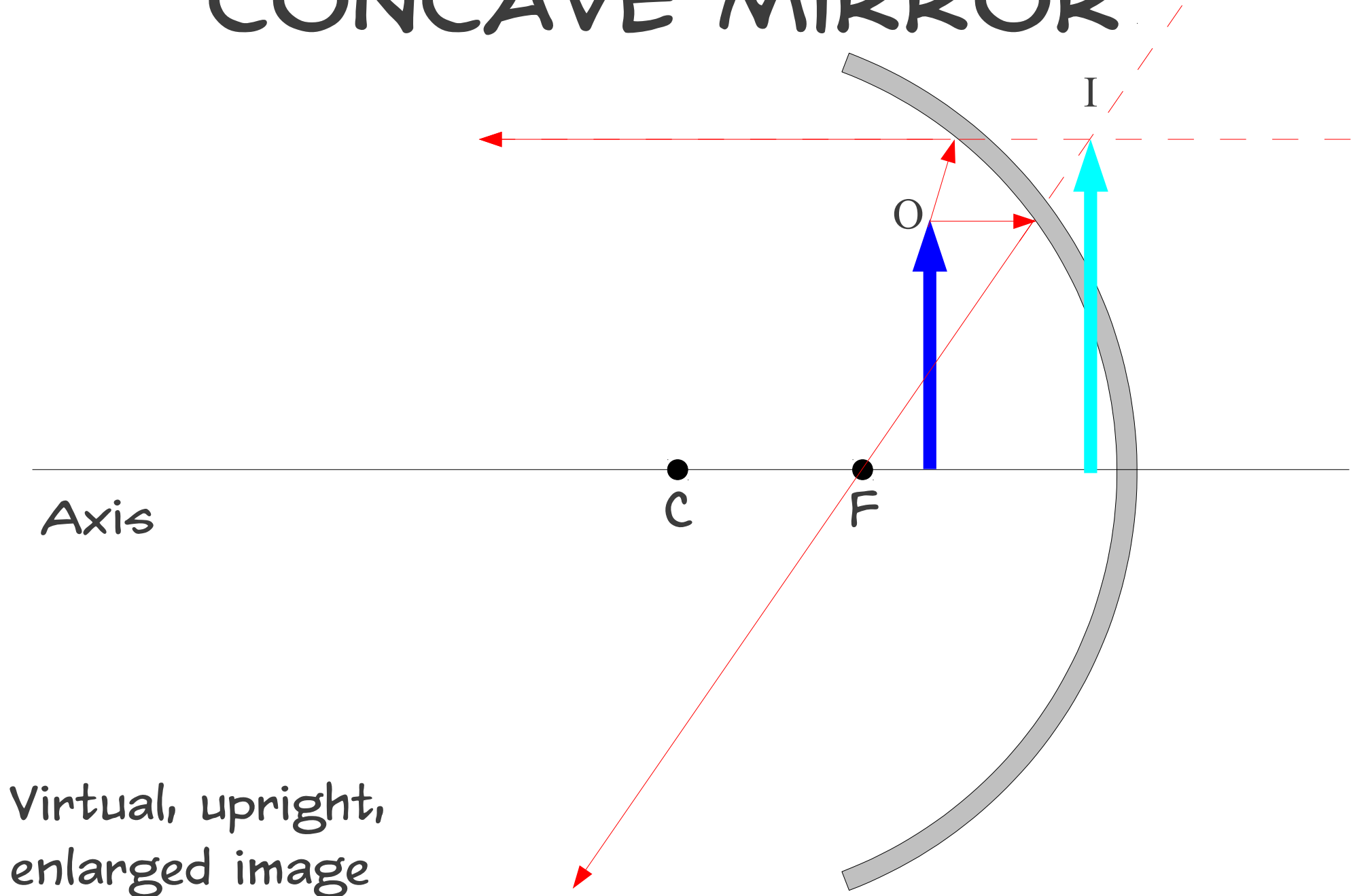
# CONCAVE MIRROR

Real, inverted,  
enlarged image



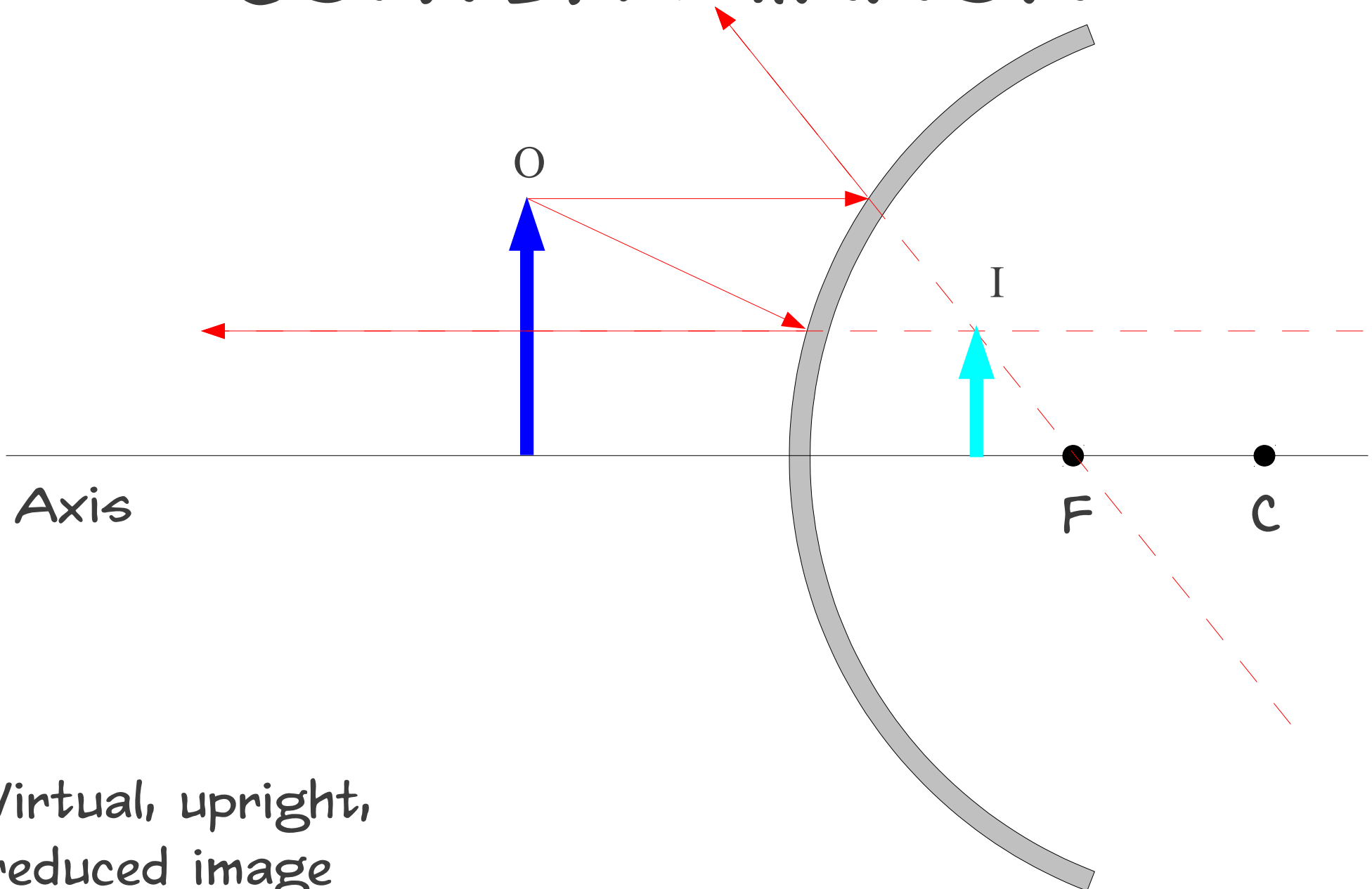


# CONCAVE MIRROR





# CONVEX MIRROR



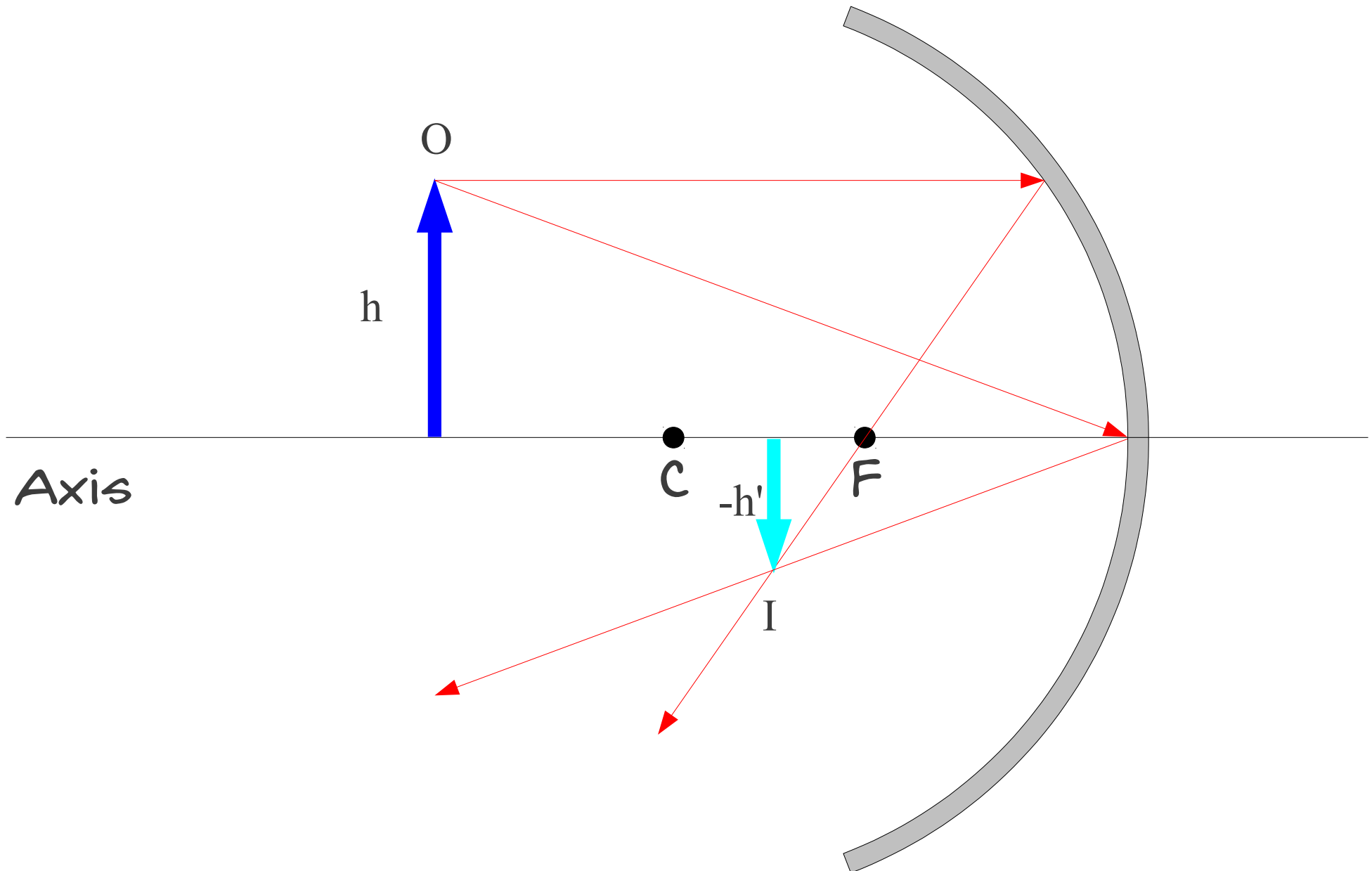
Virtual, upright,  
reduced image



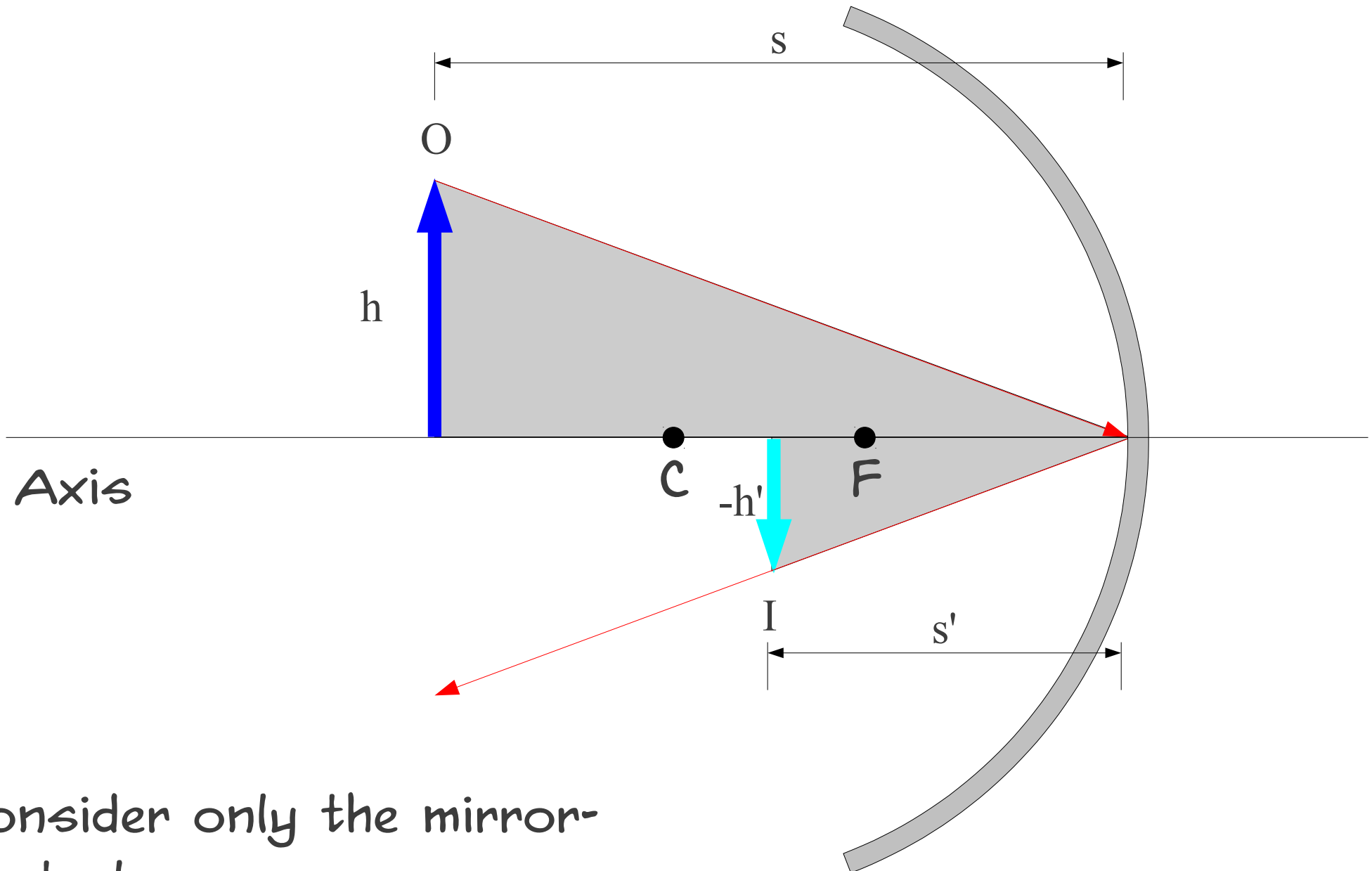




# DERIVING THE MIRROR EQUATION

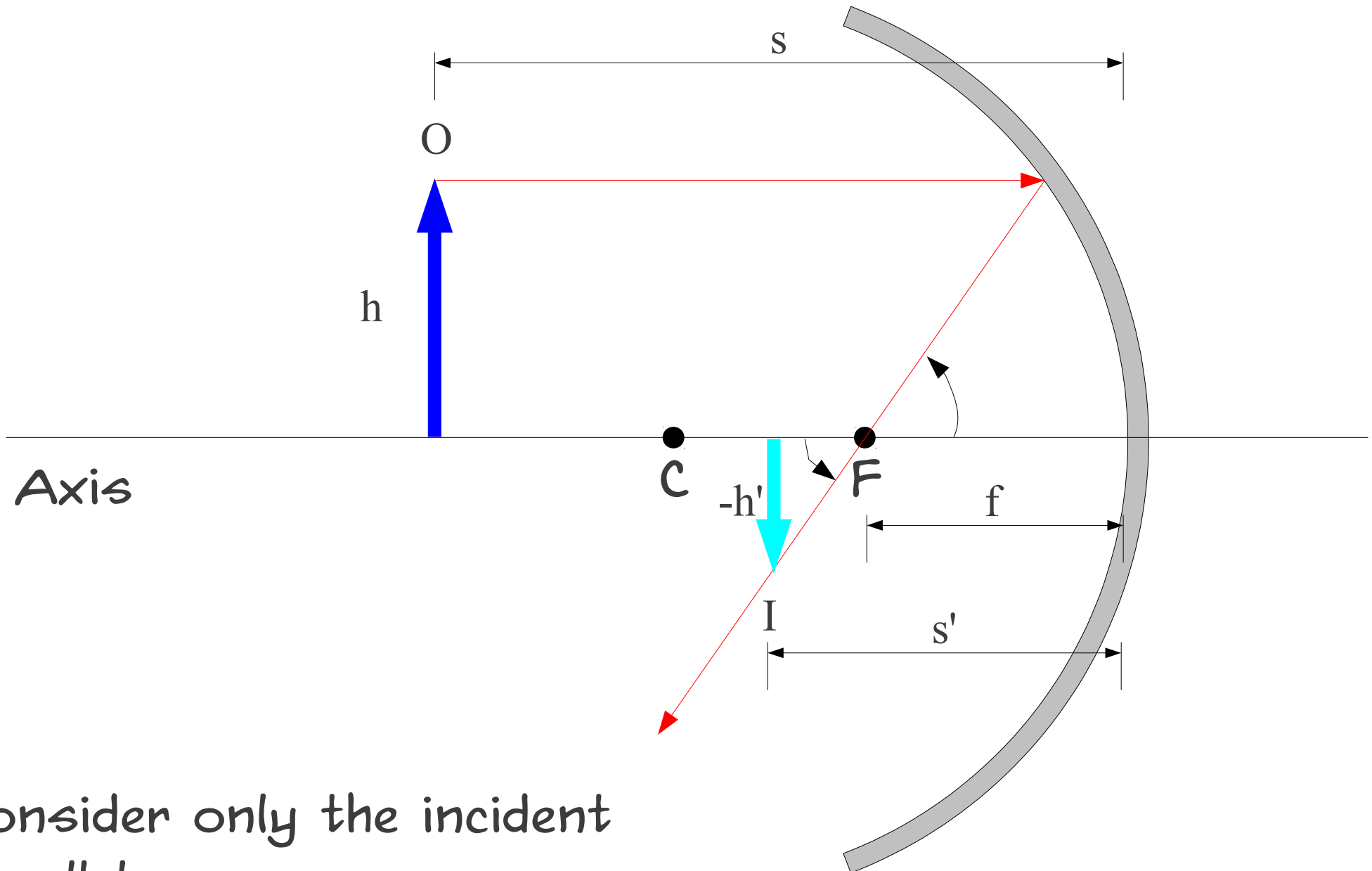


# DERIVING THE MIRROR EQUATION



Consider only the mirror-central ray

# DERIVING THE MIRROR EQUATION



Consider only the incident parallel ray